

## CLAD Awning-Section Drawings

---

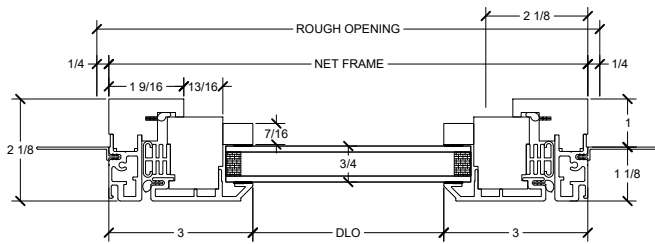
Section Details : Operating/Stationary, Minimum 1” Jamb, Nail Fin .....	2
Section Details : 4 9/16” Jamb, Nail Fin .....	3
Section Details : 6 9/16” Jamb, Nail Fin .....	4
Section Details : Big Bottom Rail .....	5
Section Details : SDL & Glazing Bead Options .....	6
Section Details : Mull Sections, Minimum 1” Jambs .....	7
Section Details : Mull Sections, Jambs Greater Than 1” .....	8

# CLAD Awning

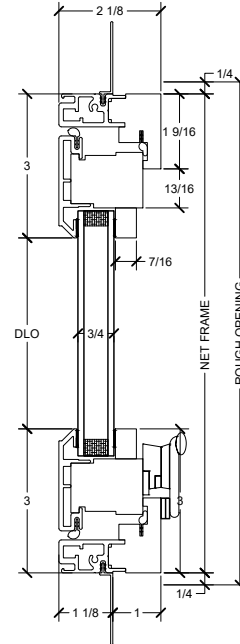
Section Details : Operating/Stationary, Minimum 1" Jamb, Nail Fin

SCALE: 3" = 1'-0"

## Operating

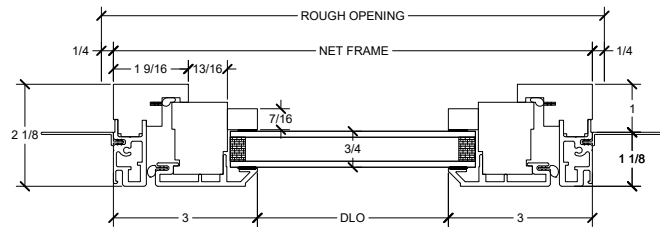


Jambs

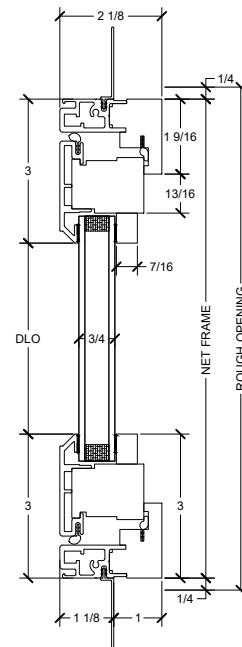


Head Jamb & Sill

## Stationary



Jambs

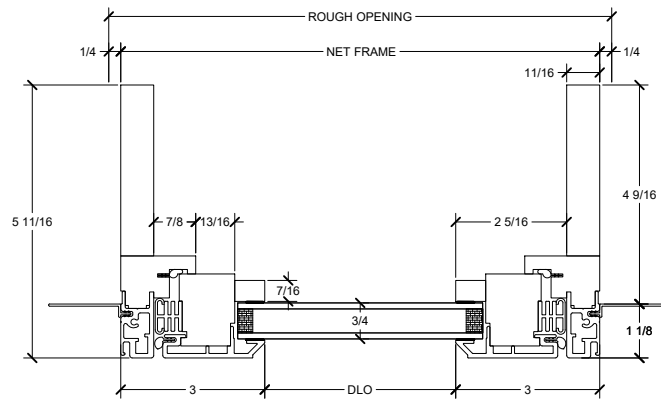


Head Jamb & Sill

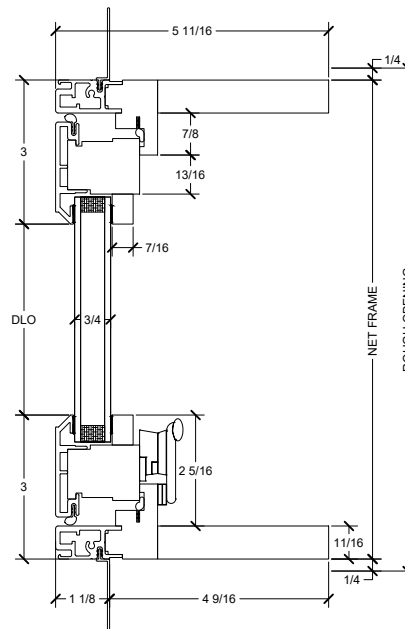
# CLAD Awning

## Section Details : 4 9/16" Jamb, Nail Fin

SCALE: 3" = 1'-0"



Jambs

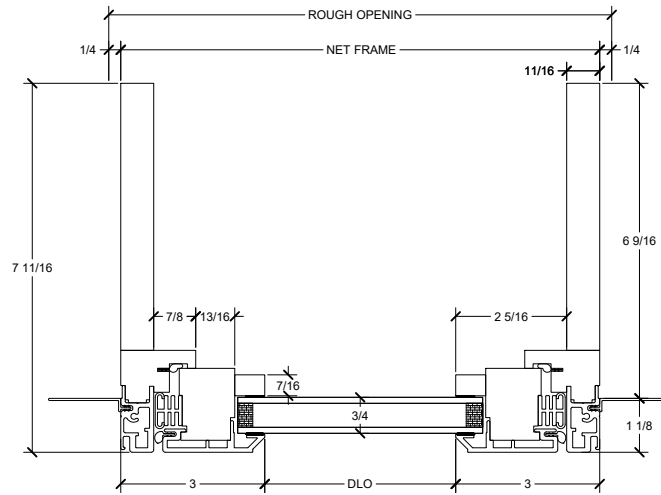


Head Jamb & Sill

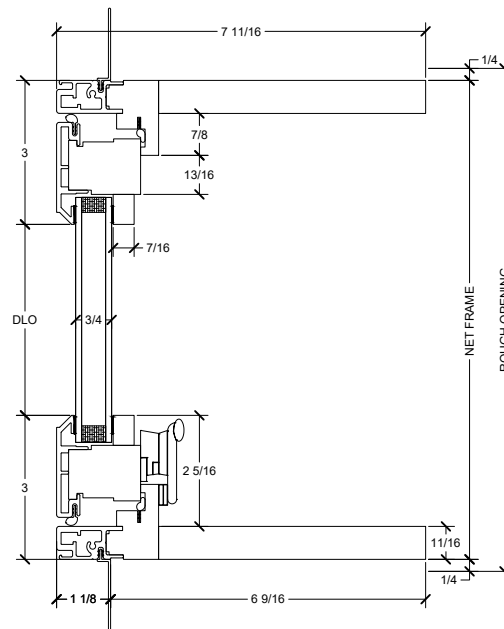
# CLAD Awning

## Section Details : 6 9/16" Jamb, Nail Fin

SCALE: 3" = 1'-0"



Jambs

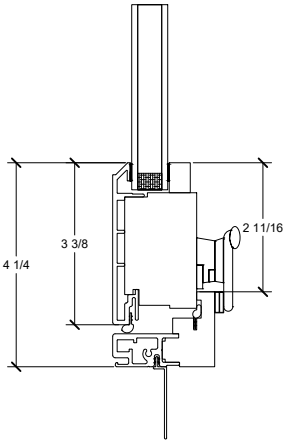


Head Jamb & Sill

# CLAD Awning

## Section Details : Big Bottom Rail

SCALE: 3" = 1'-0"

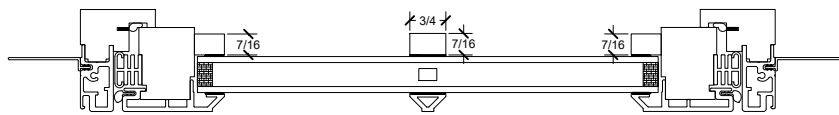


Big Bottom Rail

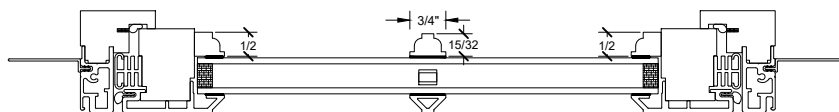
# CLAD Awning

## Section Details : SDL & Glaze Bead Options

SCALE: 3" = 1'-0"



Square Detail Interior SDL—Square Interior Glaze Bead/Bevel Bead Exterior



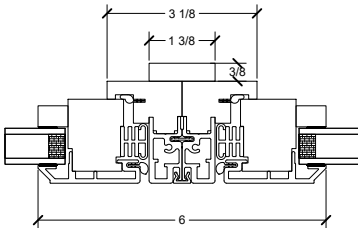
Long Bead Interior SDL—Long Bead Interior Glaze Bead/Bevel Bead Exterior

# CLAD Awning

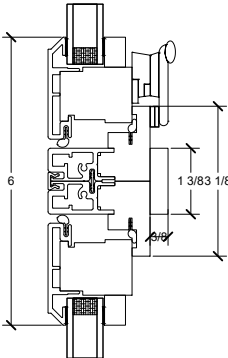
## Section Details : Mull Sections, Minimum 1" Jamb

SCALE: 3" = 1'-0"

### Mulling Clad Awning to Clad Awning

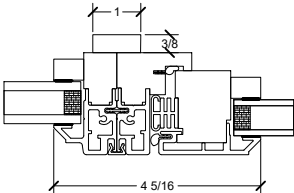


Vertical Mull

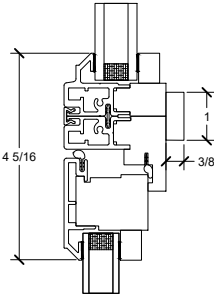


Horizontal Mull

### Mulling Clad Picture (Minimum 1" Jamb) to Clad Awning (Minimum 1" Jamb)



Vertical Mull



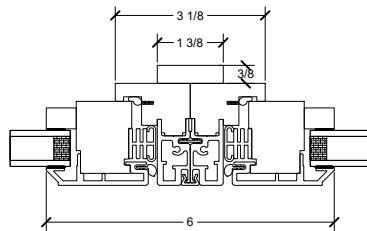
Horizontal Mull

# CLAD Awning

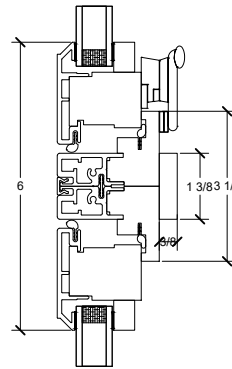
## Section Details : Mull Sections, Jambs Greater Than 1"

SCALE: 3" = 1'-0"

### Mulling Clad Awning to Clad Awning (Jambs Greater Than 1")

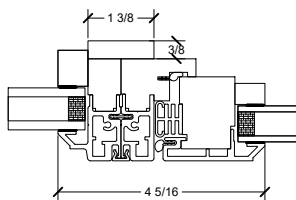


Vertical Mull

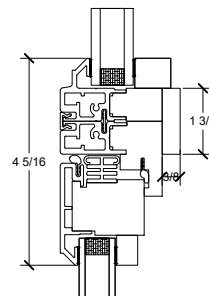


Horizontal Mull

### Mulling Clad Awning to Clad Awning (Jambs Greater Than 1")



Vertical Mull



Horizontal Mull